



STRATEGIC PLAN

TOWARDS 2030

Advancing Our Vision: 2025-2030



Emmanuel Anglican College
Learning ~ Living ~ Leading

OUR COLLEGE ETHOS

IDENTITY

Emmanuel Anglican College is a safe, inclusive, coeducational Anglican school community offering a holistic and future focused education from Early Learning through to Year 12. We learn, live and lead on the lands of the Nyangbul people of the Bundjalung nation in this place known as Bullinah (place of plenty).

PURPOSE

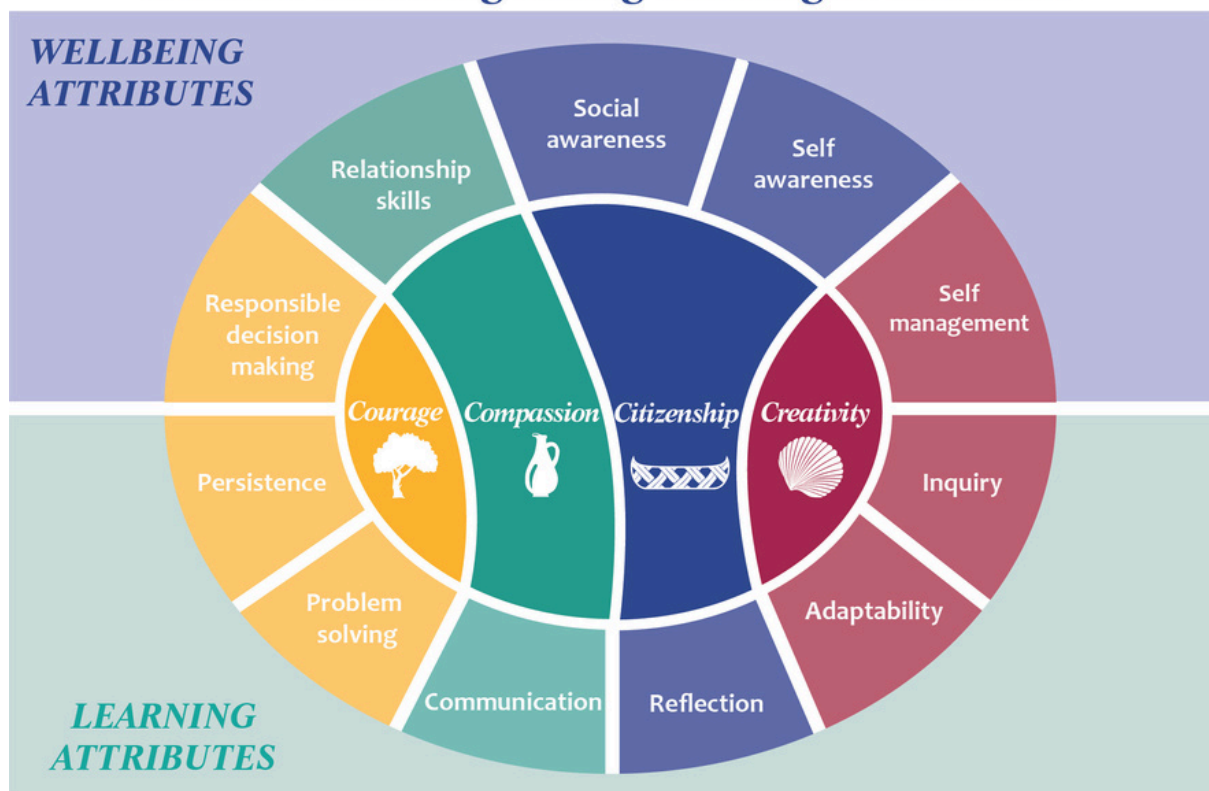
We seek to grow each student to become a person of character who is inspired by excellence and adaptability, whose life is modelled on that of Jesus; and who, through courage, creativity, compassion and citizenship, strives to create a better world.

CULTURE | LEARNING, LIVING, LEADING

Inspired by Emmanuel 'God with us', we place the dignity, safety, wellbeing and learning of our students at the heart of all that we do. All learning at Emmanuel is underpinned by an innovative, student centred and holistic approach which aims to support the spiritual, physical, intellectual, emotional, social and cultural development of a creative, compassionate and courageous community-minded person.

We aspire to model our lives on that of Jesus and leading by example, we hope to inspire others to create a better world through a life of service. Learning, living and leading for us is done in anticipation of the future and as such we strive to be forward-thinking, innovative and adaptable in seeking solutions for life.

Holistic Learning Living Leading Framework



OUR STRATEGIC INTENT

LEARNING LIFE

- Embed an innovative and inspiring integrated learning model underpinned by the *Holistic Learning Living Leading Framework*.
- Enhance our reputation as the cultural heart of the region by creating outstanding opportunities in music, performance, the arts, sport and through our international education program.

PEOPLE AND CULTURE

- Guided by the *Holistic Learning Living Leading Framework*, nurture, develop and enrich student character, shaped by Christian values and virtues in a safe, respectful and supportive environment.
- Implement the *Professional Learning and Growth Framework* to create systems and processes that support, promote and enhance the wellbeing, formation, growth, development and contribution of all College staff.

FACILITIES AND INFRASTRUCTURE

- Cultivate a safe and welcoming learning environment that enables people to gather, connect, recreate, reflect, pray, share, play, perform, learn and work in ways that are respectful, sustainable and inspiring.
- Provide fit for purpose and innovative facilities that house multi-disciplinary and real-world learning opportunities, reinforce our established and recognised ethos and provide for new opportunities and expressions of our intent.

COMMUNITY AND ADVANCEMENT

- Enhance our service learning and leadership development programs to strengthen a culture of community mindedness, social justice, active participation, leadership and service.
- Engage with local, regional and global communities and organisations, including Emmanuel alumni, to establish positive connections, build partnerships for learning and promote respect, justice and peace.





OUR COLLEGE VALUES

Develop Character | Foster Learning | Support Wellbeing | Live with Jesus as our model



COURAGE

To show faith, trust and perseverance, allowing individuals to embrace their purpose and stand firm in their beliefs, even in the face of doubt or uncertainty.

As expressed by Jesus as He declares His mission in Luke 4:16-21.

Responsible decision making | Persistence | Problem solving



COMPASSION

To show care and loving kindness towards another. To be present, listen without judgment, show respect, acknowledge their dignity and work for the betterment of others.

As modelled in the Parable of the Good Samaritan in Luke 10: 25-27.

Relationship skills | Communication



CITIZENSHIP

Building community by honouring the dignity of each person through respectful relationships, justice, inclusion, hospitality and service.

As outlined in the Beatitudes, Matthew 5: 1-12.

Self awareness | Social awareness | Reflection



CREATIVITY

To be curious, to wonder, to imagine and to dream in order to solve, invent, reconcile, build, compose and love so that things can be better.

As seen in the Story of the Annunciation and Magnificat in Luke 1.

Self management | Inquiry | Adaptability



Emmanuel Anglican College
62 Horizon Drive, Ballina NSW 2478
T: +61 2 6681 5054
E: enquiries@eac.nsw.edu.au
W: eac.nsw.edu.au

ABN: 72 079 134 060
CRICOS Provider: Emmanuel Anglican College Council (02449F)
Emmanuel Anglican College is a Child Safe Organisation