



Safe parking in school zones

in Ballina Shire

Your child is worth the
extra time it takes



Ballina Shire Council

would like to ensure that no child is injured or killed whilst travelling to and from school. To improve road safety around schools, we need your assistance.

Familiarise yourself with the parking restrictions around

your school and teach your children to be safe around traffic.



Always supervise a child and hold their hand when crossing the road.

Schools are areas where there is a lot of interaction between cars and pedestrians; including your children. Children are small, hard to see, behave unpredictably and are extremely vulnerable. Their lack of road experience means it is difficult for them to judge dangerous situations.

Boys are twice as likely to be involved in child pedestrian casualties as girls and children 10-14 years have the highest rate of child pedestrian casualties (Roads and Maritime Services). You need to take extra care when driving and parking in and around school zones, even when you think there are no children around.

Picking up your children after school - Have a plan

Plan with your child how you will collect them;

- **When and where will you be after school?**
- **Where should your child wait?**

Make sure they know not to try and get into your vehicle while it is still in traffic, even if you are stopped, they should wait until you have parked. Your school may have some arrangements in place to help you collect your children.

Important signs around schools

BUS ZONE

Fine exceeds \$265 and attracts a penalty of two demerit points.

What does it mean? You must not stop or park in a bus zone unless you are driving a bus.

Why is it there? To provide a safe place for large buses to set down and pick up passengers. Cars parking in bus zones put lives at risk by forcing buses out of “their” safety zone.



NO STOPPING

Fine exceeds \$265 and attracts a penalty of two demerit points.

What does it mean? You cannot stop in this area *for any reason*.

Why is it there? To keep sight lines clear for drivers *and* children so both have more time to avoid accidents.

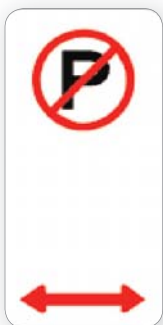


NO PARKING

Fine exceeds \$147 and attracts a penalty of two demerit points.

What does it mean? You can stop in a NO PARKING zone for a maximum of two minutes to drop off and pick up passengers. You must stay within three metres of your vehicle at all times.

Why is it there? To provide a safe place for older children to be set down and picked up without endangering other children.



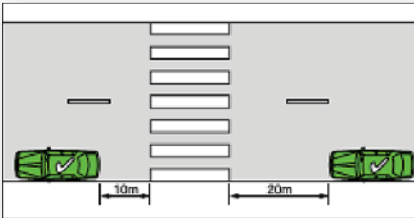
Important road rules in school zones

PEDESTRIAN CROSSINGS

What is the rule? You must not stop within 20 metres before a pedestrian crossing or 10 after a pedestrian crossing unless there is a control sign permitting parking.

Why? To ensure that pedestrians can have a clear view of approaching vehicles and drivers can see pedestrians who are about to cross the road.

Fine exceeds \$353 and attracts a penalty of two demerit points.

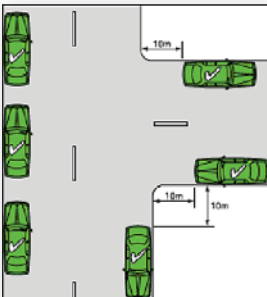


INTERSECTIONS

What is the rule? You must not stop within 10 metres of an intersection.

Why? To ensure that there is a clear view of children crossing the road at the intersection.

Fine exceeds \$206

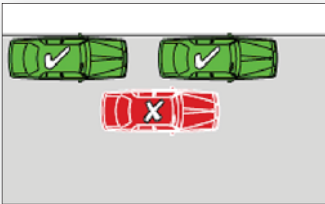


DOUBLE PARKING

What is the rule? You may not stop on the road adjacent to another vehicle at any time even to drop off or pick up passengers.

Why? Double parking forces other cars to go around you causing traffic congestion and reduces the view of drivers and children crossing the road.

Fine exceeds \$265 and attracts a penalty of two demerit points



NO apologies, NO excuses

When it comes to child safety, Ballina Shire Council makes no apologies for issuing infringement notices to drivers who break the law in and around school zones.

Illegal parking in school zones puts children at risk and endangers lives. Parking offences in school zones carry heavy fines and loss of demerit points.



If you experience a problem
with illegal or dangerous
parking at your school, contact
Ballina Shire Council.

**All Correspondence should
be addressed to:**

The General Manager
Ballina Shire Council
PO Box 450
BALLINA NSW 2478

Phone 6686 4444

Fax 6686 7035

Email council@ballina.nsw.gov.au

